

MONTHLY MEMBERSHIP PROGRESS REPORT

LOCATION NEW ZEALAND

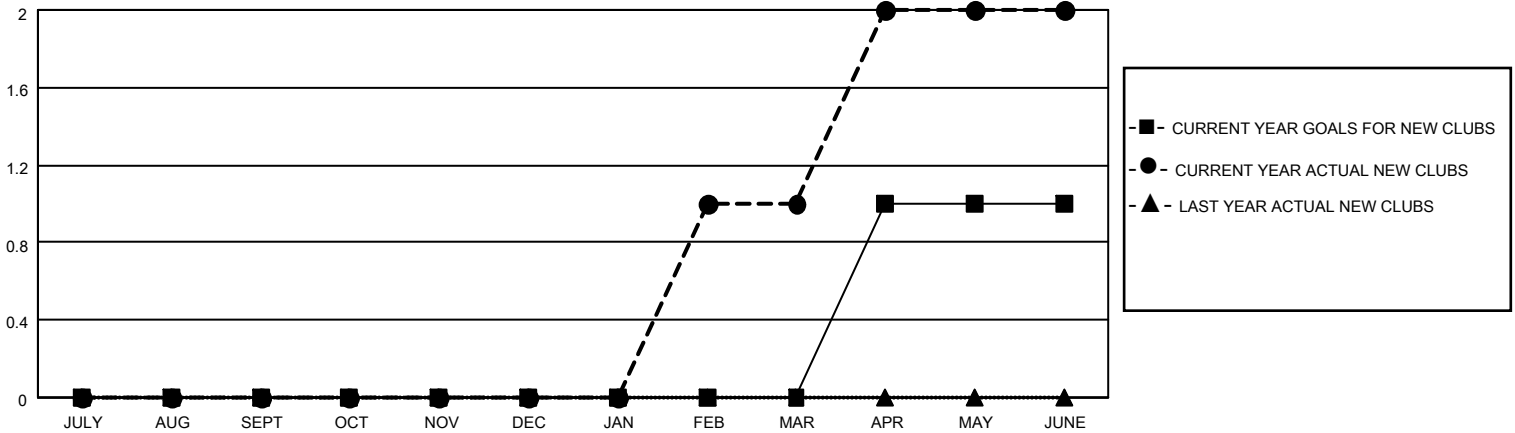
District 202 K

Results as of: 6/30/2021

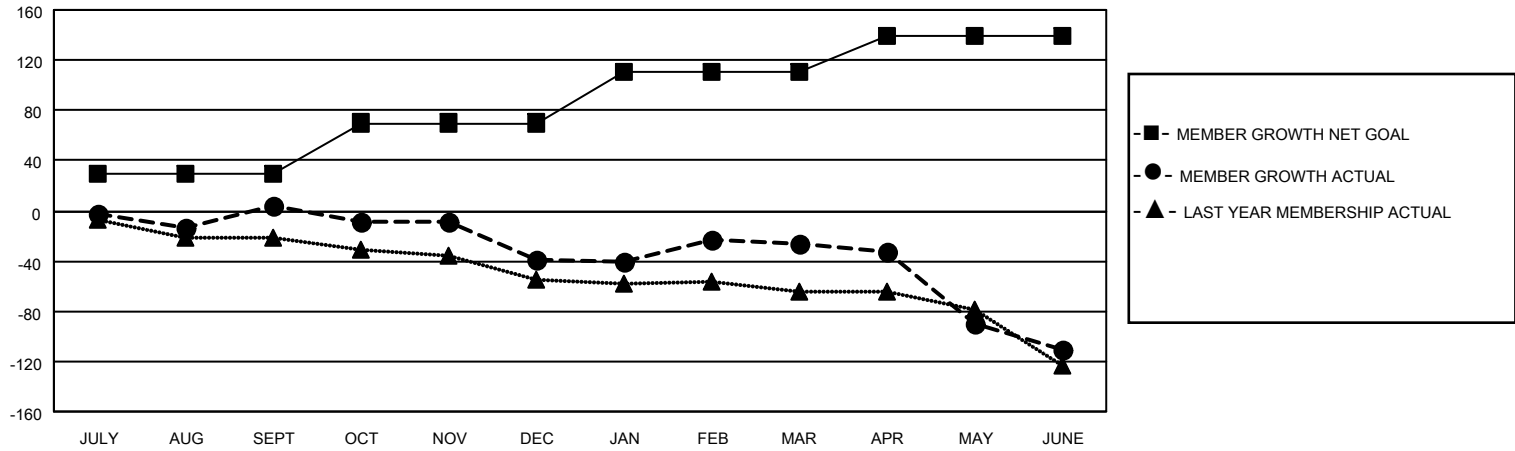
Clubs			
RESULTS FOR 2020-2021			
QUARTER	NEW CLUB GOAL	NEW CLUBS	DROPPED CLUBS
JULY/AUG/SEPT	0	0	2
OCT/NOV/DEC	0	0	0
JAN/FEB/MAR	0	1	3
APR/MAY/JUNE	1	1	1

Members			
RESULTS FOR 2020-2021			
QUARTER	MEMBER GROWTH NET GOAL	MEMBER GROWTH ACTUAL	DROPPED MEMBERS ACTUAL (including transfers)
JULY/AUG/SEPT	30	48	36
OCT/NOV/DEC	40	37	75
JAN/FEB/MAR	40	58	39
APR/MAY/JUNE	30	85	152

GOALS AND ACTUAL NEW CLUBS CUMULATIVE



GOALS AND ACTUAL MEMBERS CUMULATIVE



DROPPED CLUBS: 6

47 CLUBS OF 73 ADDED 1 OR MORE NEW MEMBERS

GENDER DISTRIBUTION

MALE 817 (63.58%)
FEMALE 468 (36.42%)

DROPPED MEMBERS

[CLICK HERE FOR CUMULATIVE MEMBERSHIP DATA](#)

DECEASED	25
CLUB CANCELLED	8
OTHER	269
TOTAL	302

TOTAL FAMILY UNIT MEMBERS	213
FAMILY MEMBERS PAYING HALF DUES	108